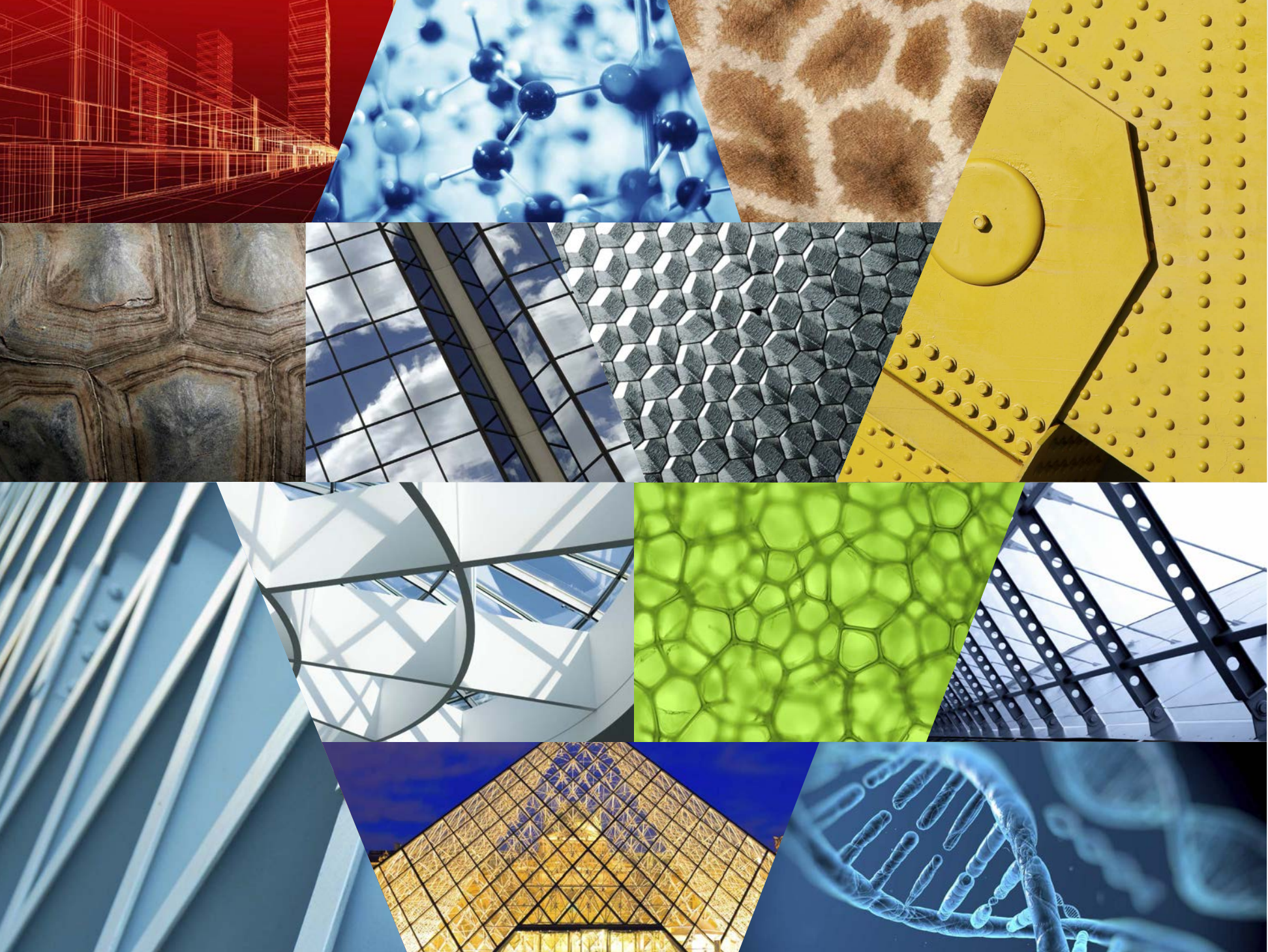


POWER CLIX

Creativity guide
Guía de la creatividad
Guide de créativité
Kreativleitfaden





required sets
sistemas requeridos
ensembles requis
erforderliche mengen

100

74

48

26

Construction Key
Guía de Construcción
Clé de Construction
Konstruktionsschlüssel



pieces
piezas
pièces
stücke



2



0



2



0



2



2



0



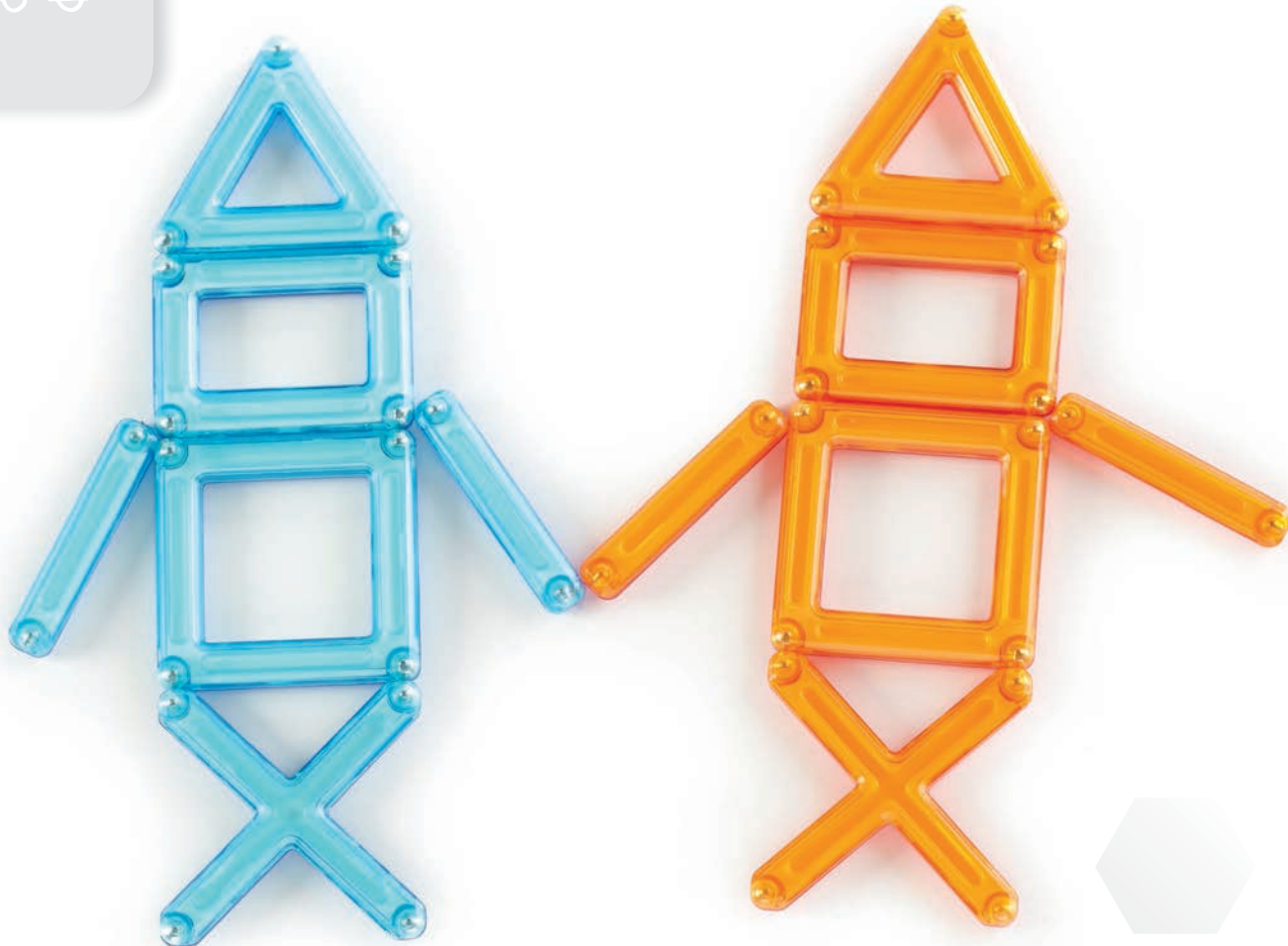
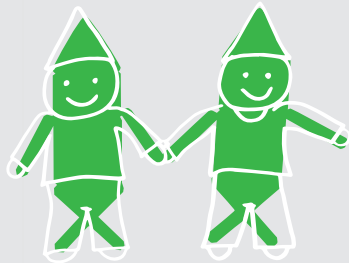
4

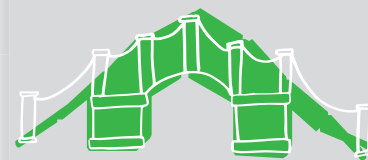
100

74

48

26





100

74

48

26

piezas
piezas
pièces
stücke



2



0



4



0



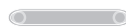
4



8



0



8

pieces
piezas
pièces
stücke



2



0



4



0



4



8



0



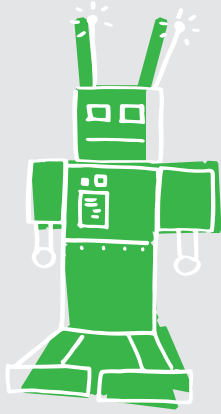
8

100

74

48

26





| |
|-----|
| 100 |
| 74 |
| 48 |
| 26 |

piecas
piezas
pièces
stücke

2

0

4

0

2

8

0

0

pieces
piezas
pièces
stücke



2



0



4



0



4



8



0



8

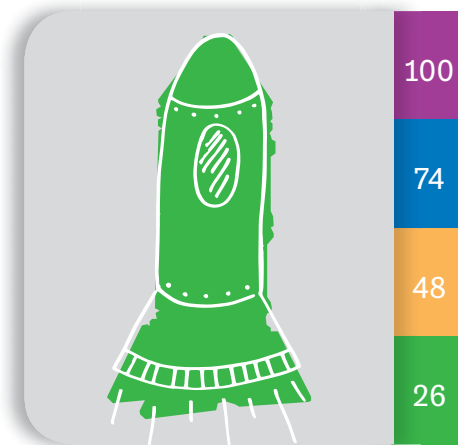
100

74









48

26





pieces
piezas
pièces
stücke

-  2
-  0
-  4
-  0
-  4
-  8
-  0
-  8

pieces
piezas
pièces
stücke

100

74

48



4



2



8



2



8



13



2



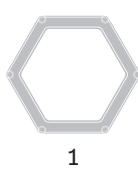
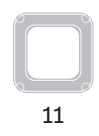
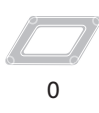
8





100
74
48

piecas
piezas
pièces
stücke



pieces
piezas
pièces
stücke

100

74

48



4



0



6



1



6



11

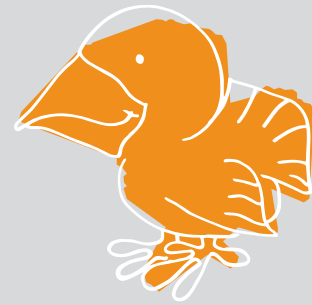


2



1





100

74

48

pieces
piezas
pièces
stücke



2



0



8



2



0



6



0



7

pieces
piezas
pièces
stücke



1



2



8



2



8



8



2



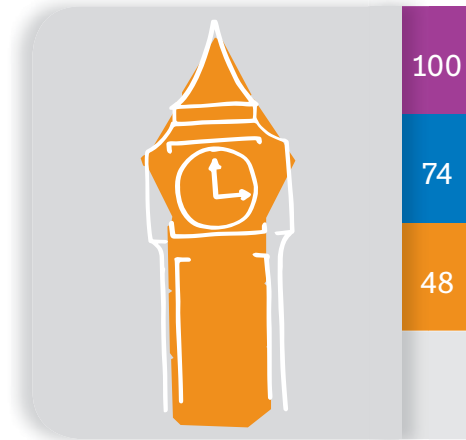
2

100

74

48





100

74

48

piecas
piezas
pièces
stücke



3



0



2



0



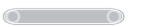
0



12



2



6

pieces
piezas
pièces
stücke



0



2



6



0



7



4



2



7

100

74

48





| |
|-----|
| 100 |
| 74 |
| 48 |

pieces
piezas
pièces
stücke

X
4

∟
2

△
7

▱
2

◻
7

◻
14

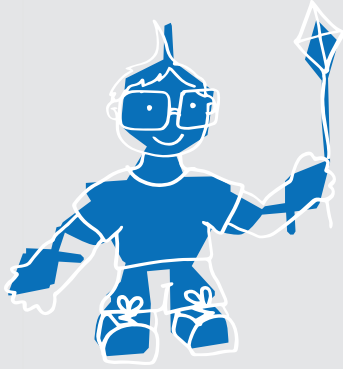
⬡
2

—
7

pieces
piezas
pièces
stücke

100

74



5



6



6



1



8



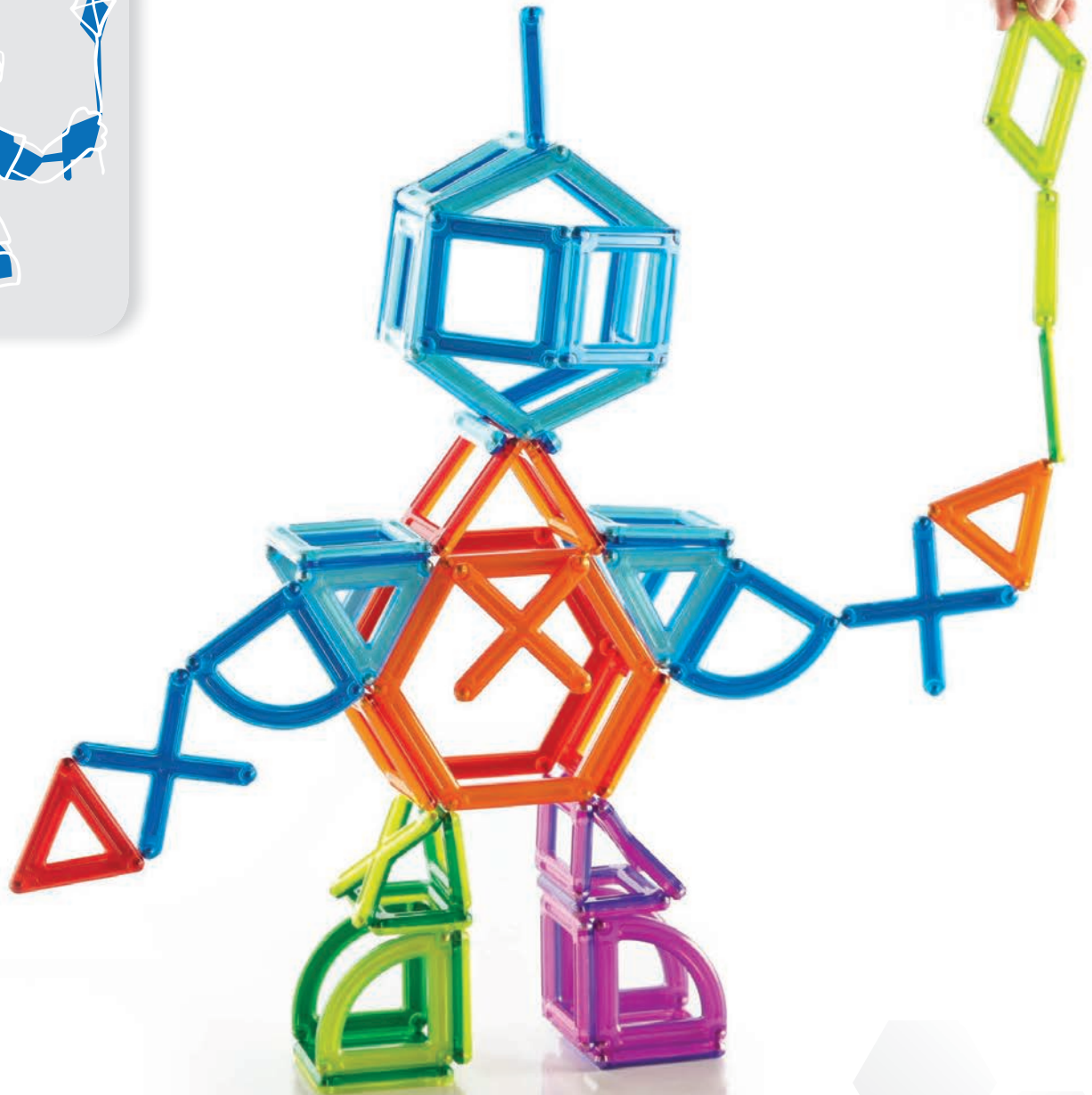
12

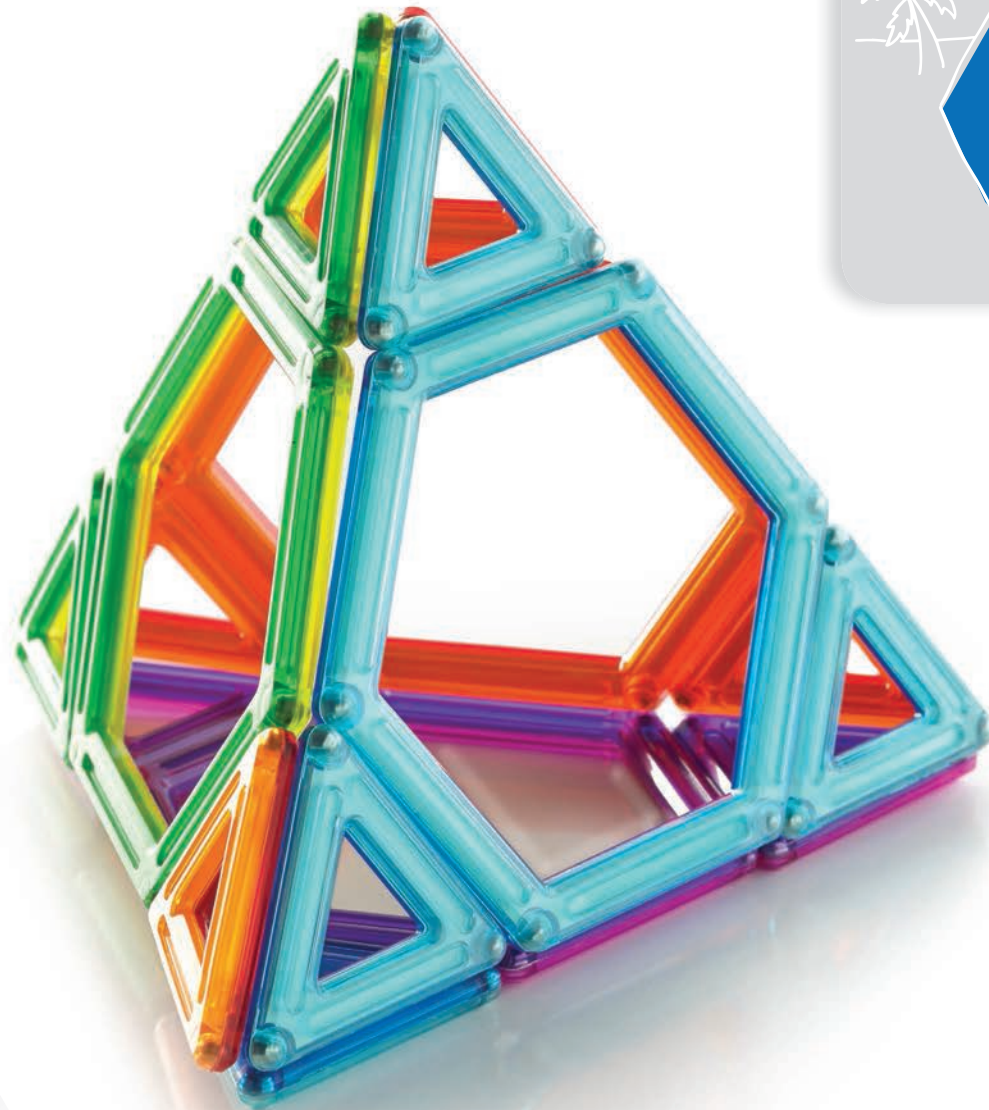


4



5





100

74

- pieces
piezas
pièces
stücke
- 0
 - 0
 - 12
 - 0
 - 0
 - 0
 - 4
 - 0

pieces
piezas
pièces
stücke

100

74



3



1



2



2



6



0

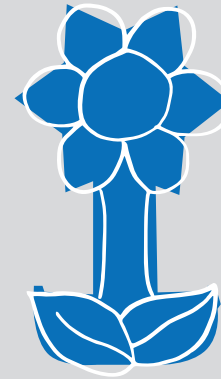


2



0





100

74

pieces
piezas
pièces
stücke



0



4



12



0



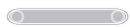
10



6



2

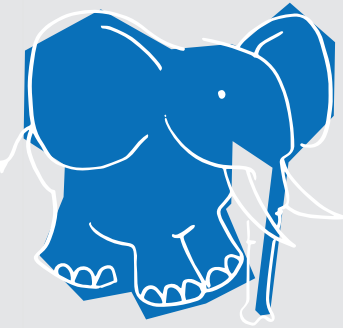


2

pieces
piezas
pièces
stücke

100

74



3



0



3



2



2



9



4



2





100

74

pieces
piezas
pièces
stücke



0



0



12



0



11



0



2

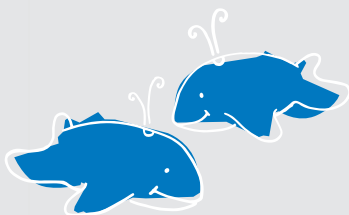


2

pieces
piezas
pièces
stücke

100

74



0



8



6



0



0



8

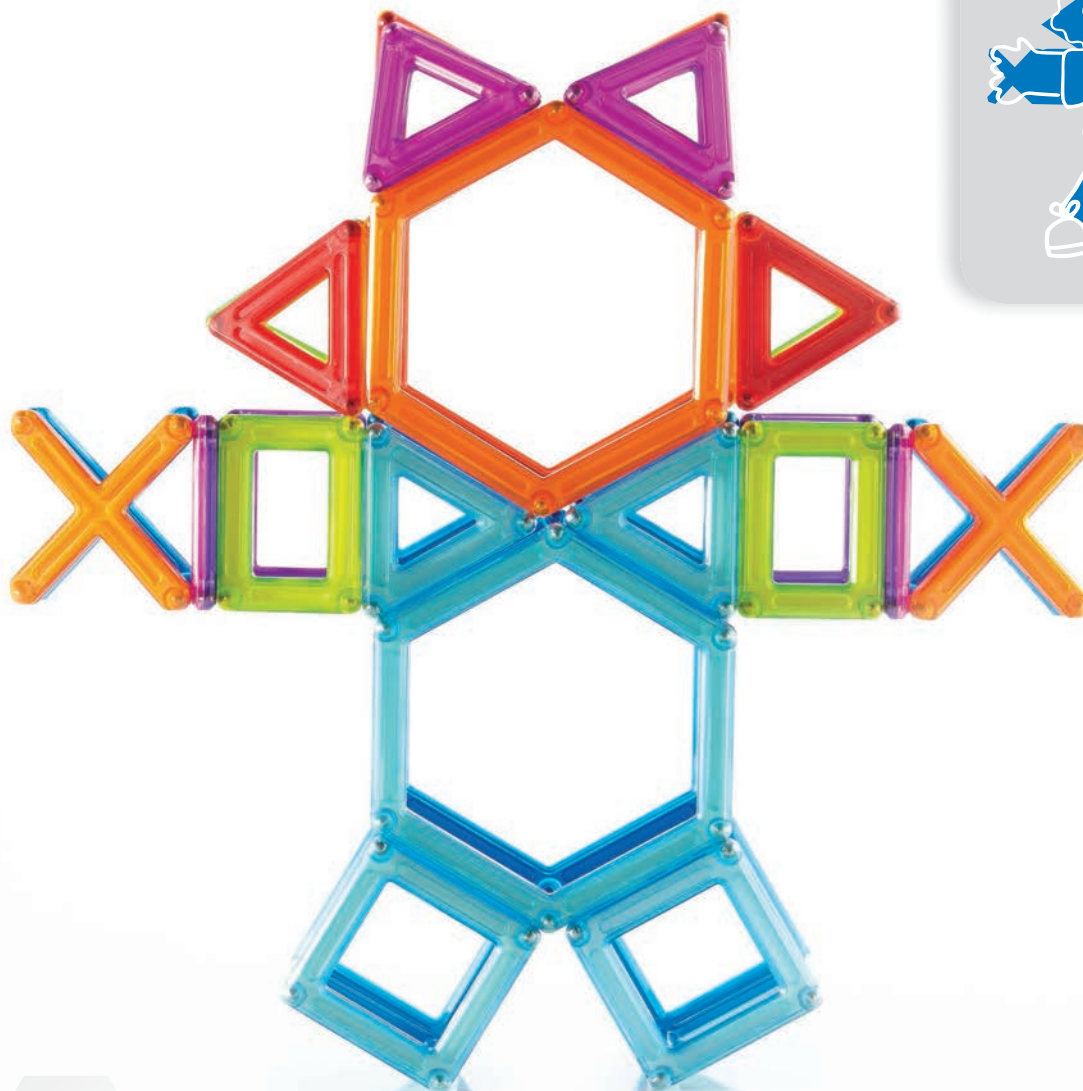


0



8





100

74

pieces
piezas
pièces
stücke



4



0



12



0



10



6



4

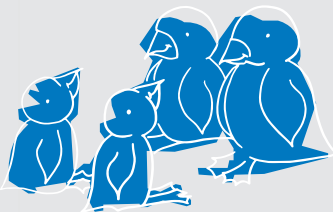


0

pieces
piezas
pièces
stücke

100

74



4



8



12



0



10



5

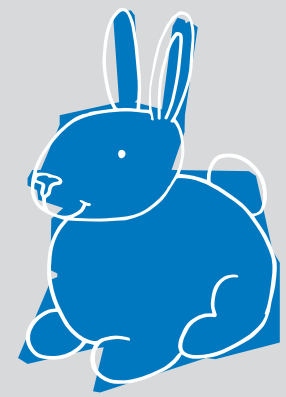
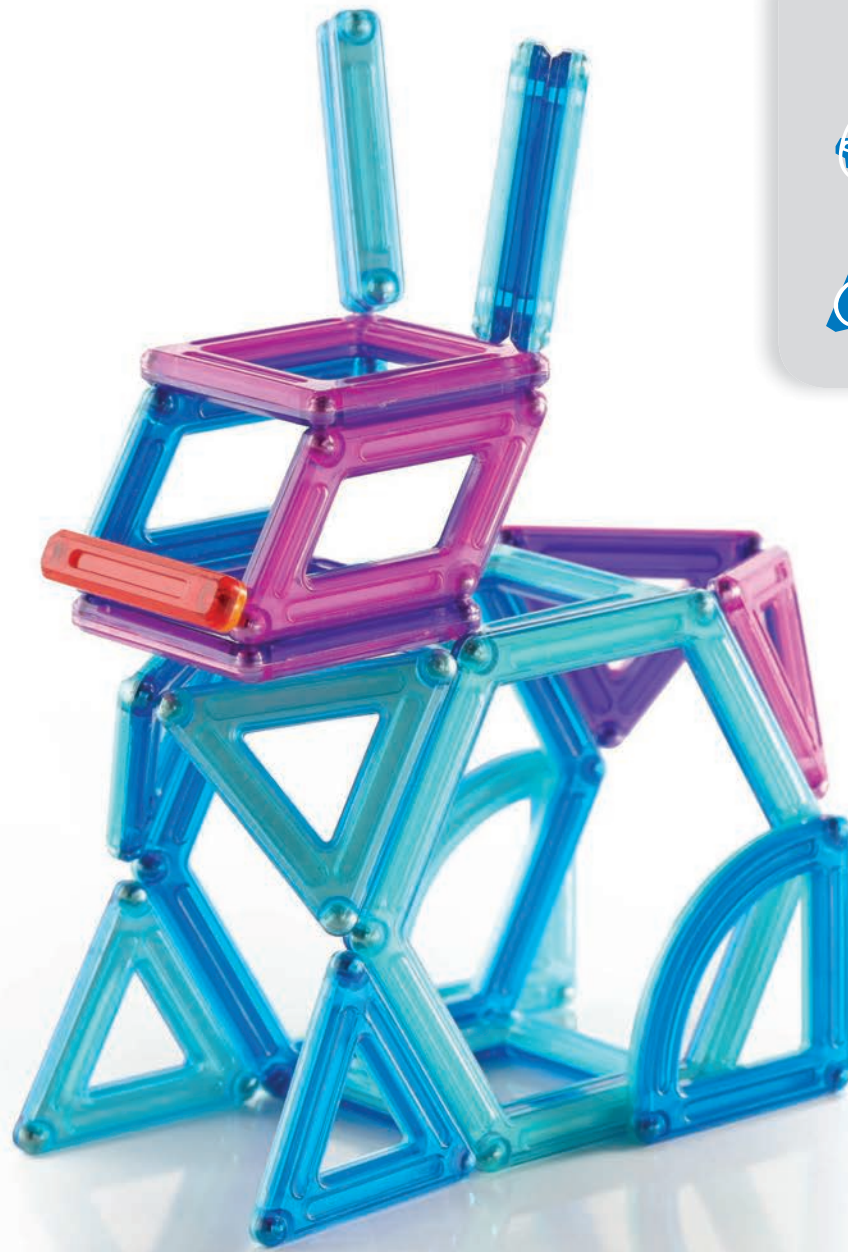


4



6





100

74

pieces
piezas
pièces
stücke

X
0

∠
2

△
6

▱
2

◻
0

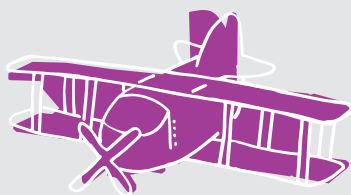
◻
4

⬡
2

—
5

pieces
piezas
pièces
stücke

100



4



4



0



2



13



12

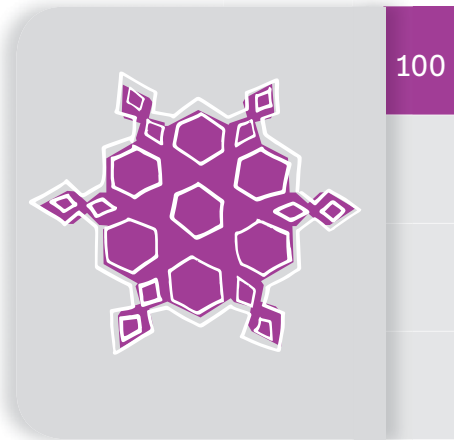
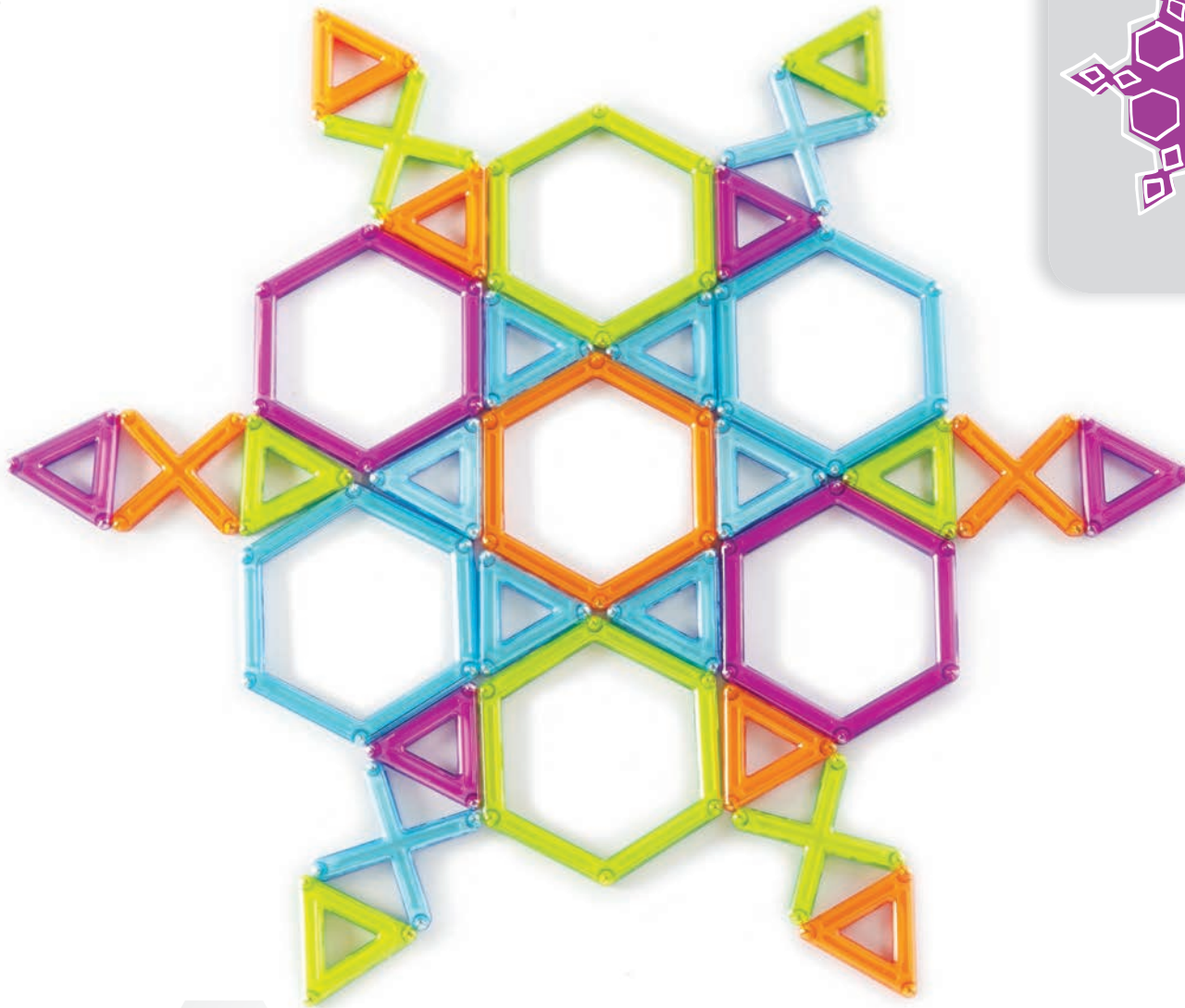


0



8





pieces
piezas
pièces
stücke

100



6



0



18



0



0



0



7



0

pieces
piezas
pièces
stücke

100



8



3



8



6



9



16



8



12





100

piezas
piezas
pièces
stücke



2



4



7



2



2



1



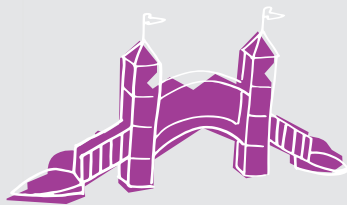
3



17

pieces
piezas
pièces
stücke

100



8



4



17



4



12



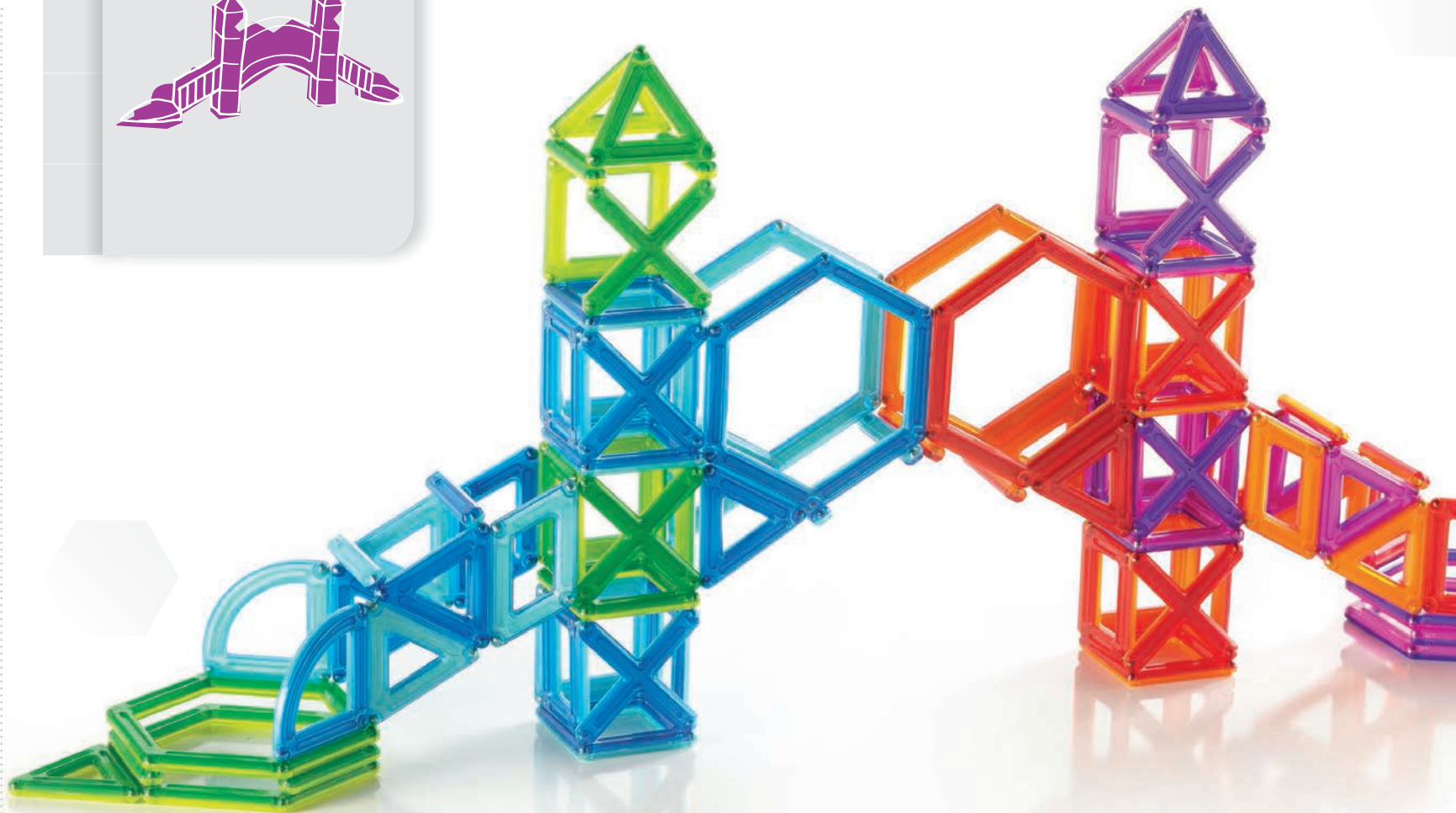
16

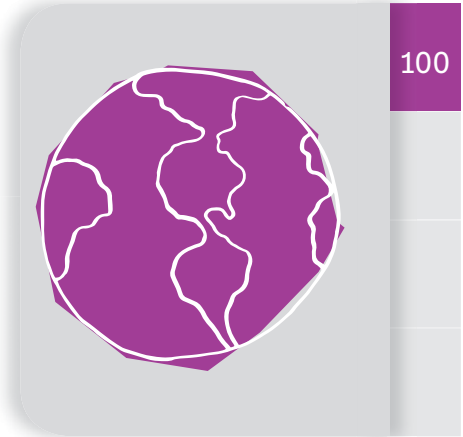


8



16





100

pieces
piezas
pièces
stücke



6



0



12



0



0



0



6



0



pieces
piezas
pièces
stücke

100



8



0



12



8



10



10



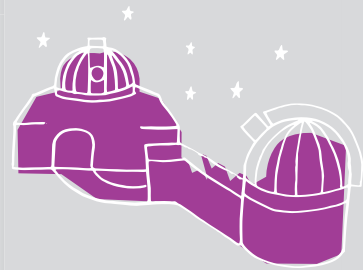
4



0



100



pieces
piezas
pièces
stücke



8



6



15



6



0



8



7

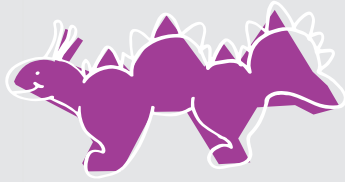


12



pieces
piezas
pièces
stücke

100



4



2



10



4



10



8

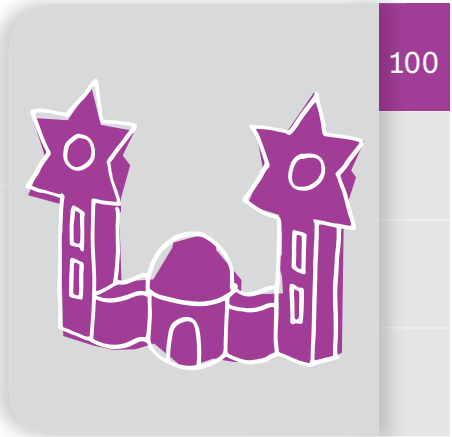
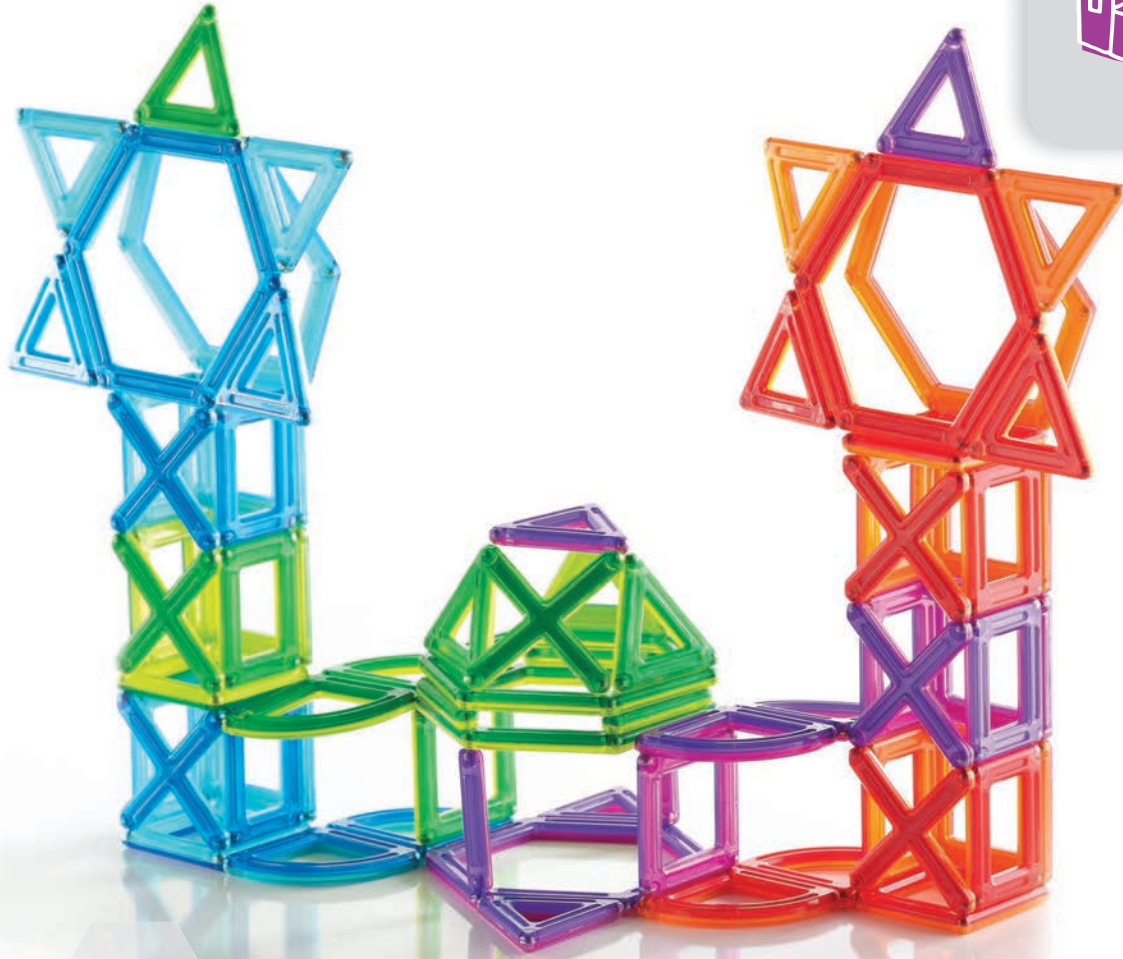


8

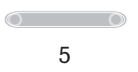
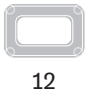
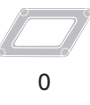


6





pieces
piezas
pièces
stücke



pieces
piezas
pièces
stücke

100



2



0



18



0



12



10

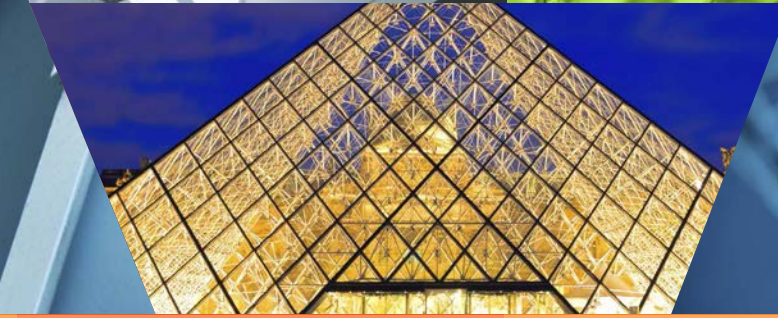
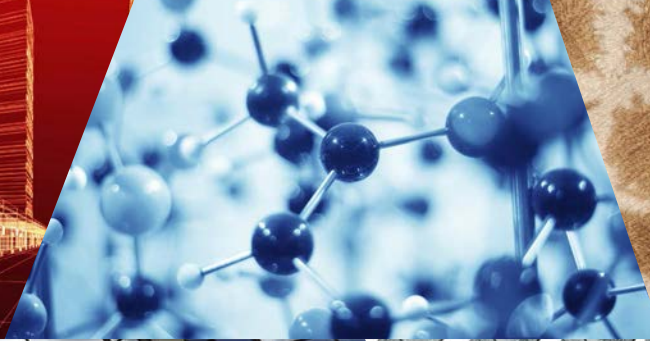


8



12





guide  craft

guidecraft.com/powerclix



Conforms to product safety standards ASTM F963, EN71 regulatory requirements and the CHPA: Canadian Hazardous Product Act. Please retain this information for future reference. Please remove all packaging material before giving to children.

Cumple las normas de seguridad de productos ASTM F963, los requisitos reguladores EN71 y CHPA: Ley canadiense de Productos Peligrosos. Conserva esta información para su futura consulta. Elimina todo el embalaje antes de dárselos a los niños.

Conformes aux normes de sécurité des produits ASTM F963, aux exigences de réglementation EN71 et à l'Acte Canadien des Produits Dangereux ("CHPA": Canadian Hazardous Product Act). Veuillez retenir cette information pour toute référence future. Veuillez enlever tous les emballages avant de les donner aux enfants.

Entspricht den Produkt-Sicherheits-Standards ASTM F963, EN71, behördlichen Vorschriften und dem CHPA: kanadisches Gesetz über gefährliche Produkte. Heb dir diese Informationen für die Zukunft auf. Alles Verpackungsmaterial sollte entfernt werden, bevor das Spielzeug Kindern gegeben wird.

